

Phospho-CRK(S41) Antibody
Affinity Purified Rabbit Polyclonal Antibody (Pab)
Catalog # AP3304a

Specification

Phospho-CRK(S41) Antibody - Product Information

Application	DB,E
Primary Accession	P46108
Other Accession	Q63768 , Q64010 , Q96GA9
Reactivity	Human
Predicted	Mouse, Rat
Host	Rabbit
Clonality	Polyclonal
Isotype	Rabbit IgG
Calculated MW	33831

Phospho-CRK(S41) Antibody - Additional Information

Gene ID 1398

Other Names

Adapter molecule crk, Proto-oncogene c-Crk, p38, CRK

Target/Specificity

This CRK Antibody is generated from rabbits immunized with a KLH conjugated synthetic phosphopeptide corresponding to amino acid residues surrounding S41 of human CRK.

Dilution

DB~~1:500

E~~Use at an assay dependent concentration.

Format

Purified polyclonal antibody supplied in PBS with 0.09% (W/V) sodium azide. This antibody is purified through a protein A column, followed by peptide affinity purification.

Storage

Maintain refrigerated at 2-8°C for up to 2 weeks. For long term storage store at -20°C in small aliquots to prevent freeze-thaw cycles.

Precautions

Phospho-CRK(S41) Antibody is for research use only and not for use in diagnostic or therapeutic procedures.

Phospho-CRK(S41) Antibody - Protein Information

Name CRK

Function Involved in cell branching and adhesion mediated by BCAR1- CRK-RAPGEF1 signaling

and activation of RAP1.

Cellular Location

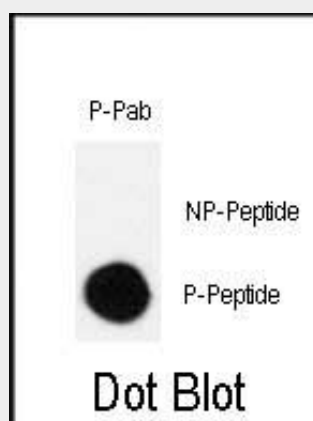
Cytoplasm. Cell membrane. Note=Translocated to the plasma membrane upon cell adhesion.

Phospho-CRK(S41) Antibody - Protocols

Provided below are standard protocols that you may find useful for product applications.

- [Western Blot](#)
- [Blocking Peptides](#)
- [Dot Blot](#)
- [Immunohistochemistry](#)
- [Immunofluorescence](#)
- [Immunoprecipitation](#)
- [Flow Cytometry](#)
- [Cell Culture](#)

Phospho-CRK(S41) Antibody - Images



Dot blot analysis of Phospho-CRK-S41 polyclonal antibody (Cat# AP3304a) on nitrocellulose membrane. 50ng of Phospho-peptide or Non Phospho-peptide per dot were adsorbed. Antibody working concentration was 0.5ug per ml. P-Pab: phospho-antibody; P-Peptide: phospho-peptide; NP-Peptide: non-phospho-peptide.

Phospho-CRK(S41) Antibody - Background

CRK is a member of an adapter protein family that binds to several tyrosine-phosphorylated proteins. It has several SH2 and SH3 domains (src-homology domains) and is involved in several signaling pathways, recruiting cytoplasmic proteins in the vicinity of tyrosine kinase through SH2-phosphotyrosine interaction. The N-terminal SH2 domain of this protein functions as a positive regulator of transformation whereas the C-terminal SH3 domain functions as a negative regulator of transformation.

Phospho-CRK(S41) Antibody - References

- Bougneres, L., et al., J. Cell Biol. 166(2):225-235 (2004).
Stoletov, K.V., et al., Exp. Cell Res. 295(1):258-268 (2004).
Miller, C.T., et al., Oncogene 22(39):7950-7957 (2003).
Sun, J., et al., J. Biol. Chem. 278(35):32794-32800 (2003).
Zhang, X.A., et al., J. Biol. Chem. 278(29):27319-27328 (2003).